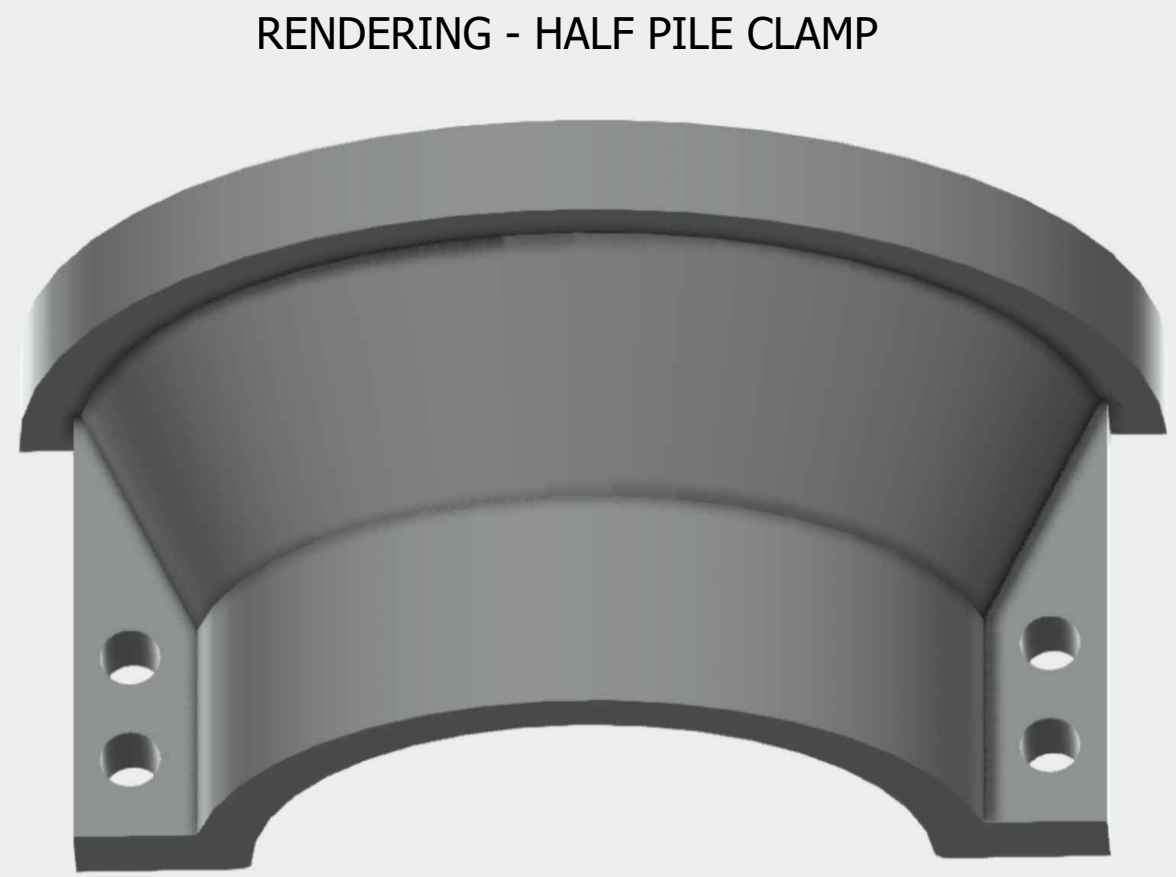
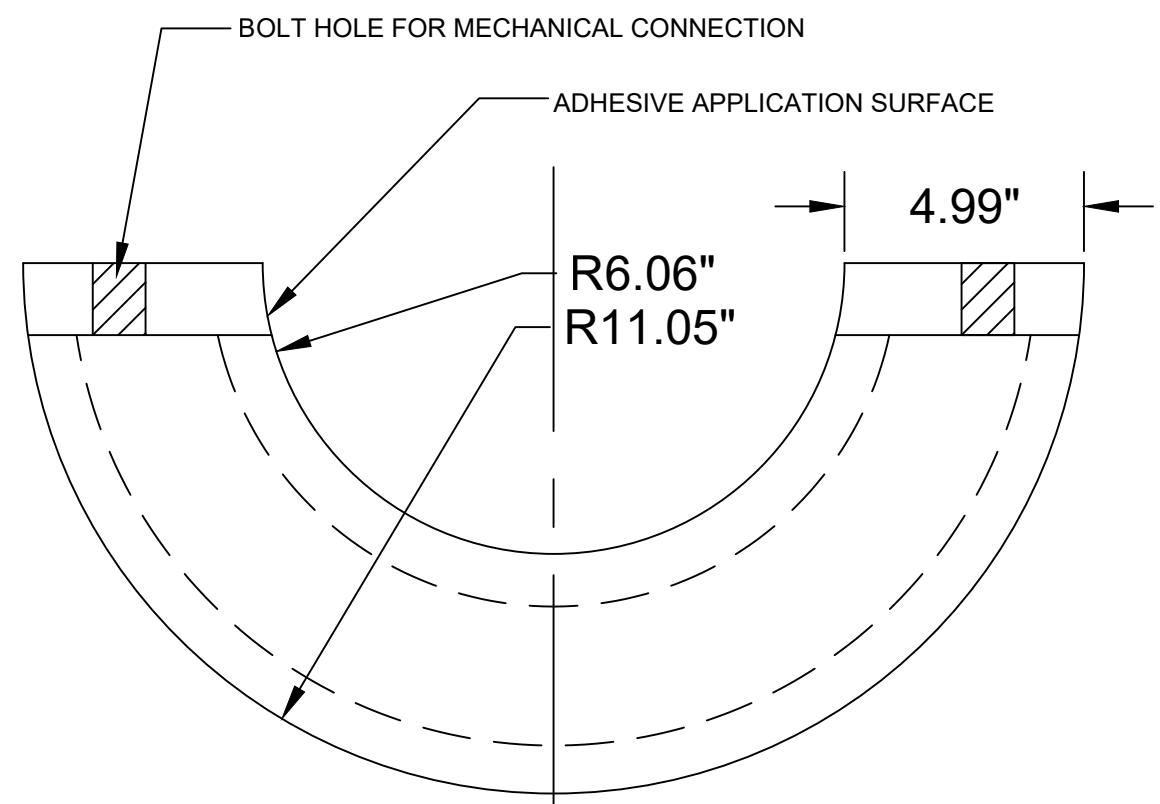
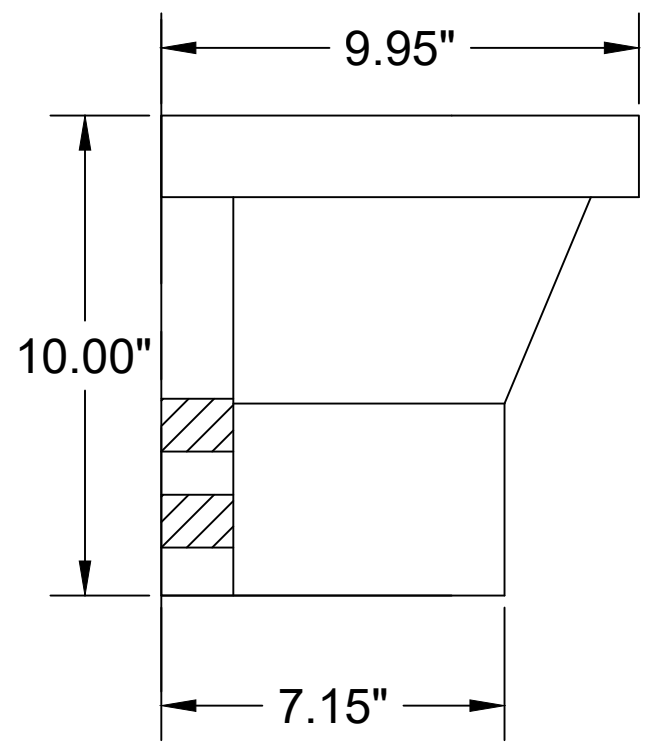
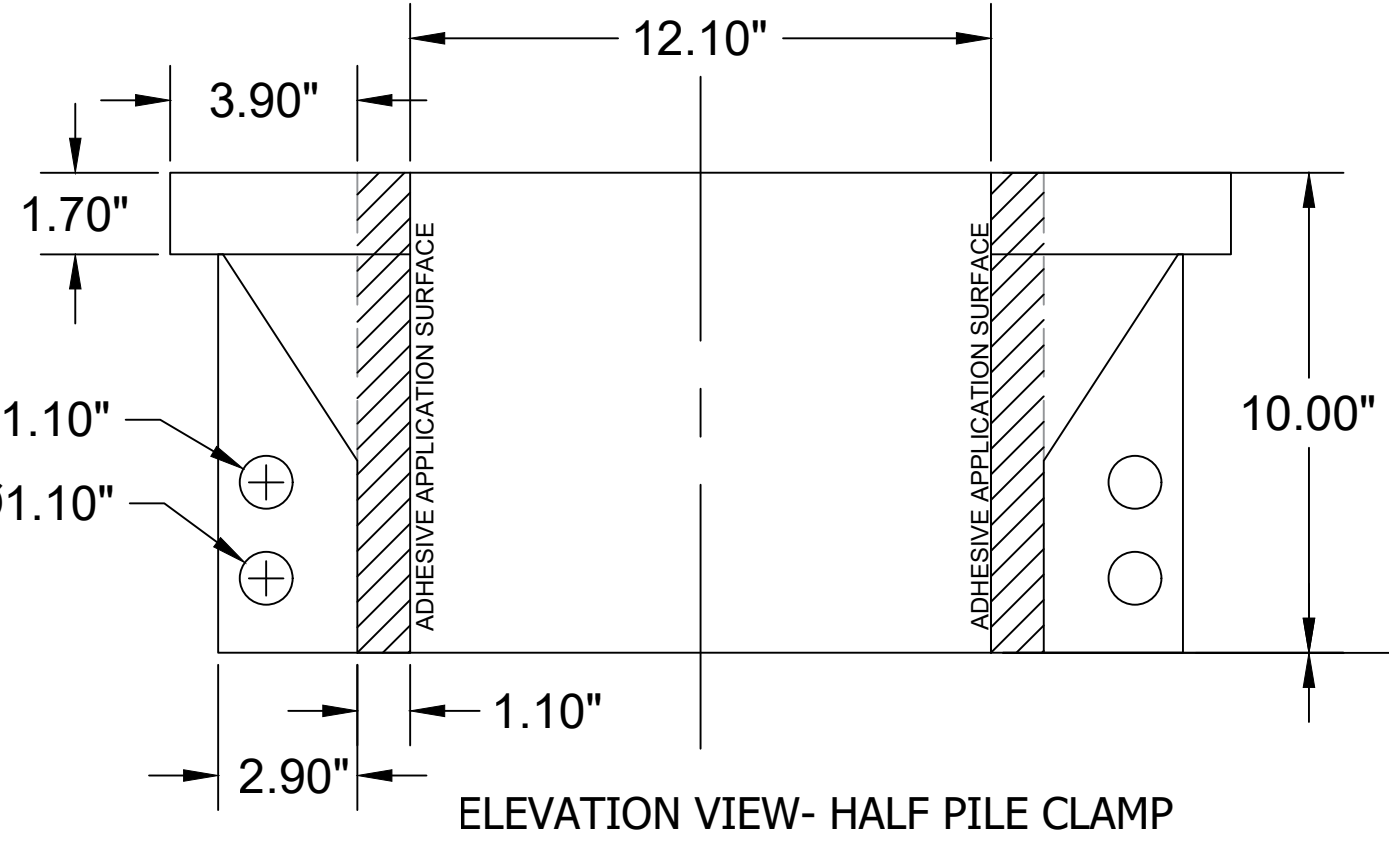




ATLANTIC REEFMAKER
718 LIVE OAK DRIVE
SUNSET BEACH, NC 28468
(919) 632-7509

DES	DRW	CHK
RAB	MEC	RAB

FIBERGLASS REINFORCED COMPOSITE PILE CLAMP



NOTE: PILE CLAMP MATERIAL IS A VINYL ESTER RESIN WITH WOVEN FIBERGLASS REINFORCED COMPOSITE AND CONFORMS TO ASTM D5421. THE CLAMP TO PILE CONNECTION IS ACHIEVED THROUGH AN ADHESIVE AND MECHANICAL CONNECTION. CLAMP ADHESIVE IS A TWO-PART MARINE EPOXY. THE MECHANICAL CLAMP CONNECTION UTILIZES COMPOSITE BOLTS AND NUTS WHICH ARE USED TO HOLD THE CLAMP TO THE PILE UNTIL THE MARINE EPOXY HAS ACHIEVED FULL BONDING STRENGTH. THE CLAMP SHALL SUPPORT A MINIMAL AXIAL LOAD OF 210,000 LBS.

NOT TO SCALE

SCALE 1" = 4"

DATE: 12/20/2020

PROJECT NO.
SCO ID# 20-21989-01A

SHEET 4 OF 5

ARM-04